

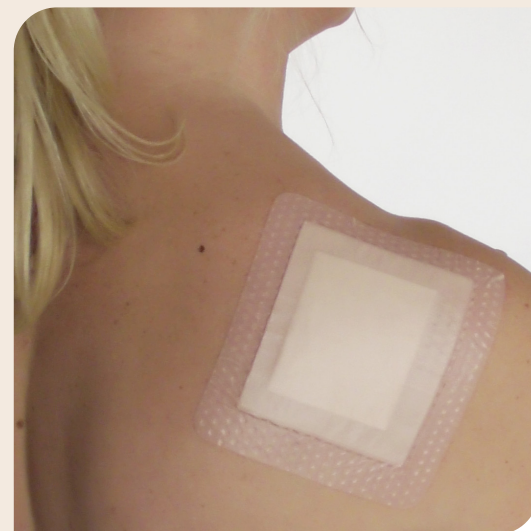
DryMax Border

DryMax Border is indicated for use on exuding wounds. DryMax Border is a sterile, bordered superabsorbent dressing with a silicone wound contact layer for fixation.

DryMax Border is a superabsorbent dressing that locks in wound exudate. The exudate is transported away from the wound area efficiently into the DryMax Technology core. A moist wound environment is maintained and the risk for maceration and damage on the peri-wound skin is minimized. The wound dressing absorbs wound fluid containing bacteria and other detrimental substances for the wound healing process.

DryMax Border can be used directly on exuding wounds. The soft and highly conformable material allows close skin contact. The silicone contact layer makes the dressing comfortable for the patient and easy to apply, even on challenging body parts where stiffer dressings are not suitable. The silicone layer also provides fixation and its atraumatic surface helps with a soft removal.

DryMax Border has a protection liner that is easy to remove at application. Place the white wound contact side with a silicone adhesive towards the wound. Apply smoothly to avoid creases on the border. The adhesive layer makes it easy to apply and reposition the dressing. During use, the dressing feels dry and comfortable, with a breathable water-resistant backing. DryMax Border can be combined with compression therapy.



- **All-in-one dressing**
- **Atraumatic silicone contact layer**
- **Locks in wound exudate**

Product size (cm)	Pcs/box	Absorption capacity*	REF	PIP code	NHS Cat Number
10x10 cm	10	25 ml	F50513/10	421-9648	EJA292
15x15 cm	10	75 ml	F50514/10	421-9630	EJA287
10x20 cm	10	55 ml	F50515/10	421-9655	EJA286

* According to international standard EN 13726



DryMax® technology