

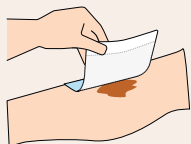
DryMax Blue

DryMax Blue is a sterile, conformable, superabsorbent dressing for use on exuding wounds. DryMax Blue absorbs and retains exudate in the dressing. The exudate is absorbed vertically by the dressing and retained in the core forming a gel, thus minimizing the risk of maceration and maintaining a moist wound environment.

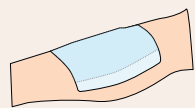
DryMax Blue remains dry and comfortable for the patient. Simultaneously it contributes to a moist wound environment. The dressing has a white hydrophilic wound contact layer to be placed towards the wound. The hydrophilic contact layer transports fluid effectively away from the wound and distributes it evenly into the ABSORBEST core. The dressing has a blue hydrophobic backing to reduce the risk of wound fluid strike-through.

The ultra-thin and highly conformable features allows the dressing to be used on all parts of the body. The seamless cover simplifies positioning over the wound. DryMax Blue is designed to work very well together with compression therapy.

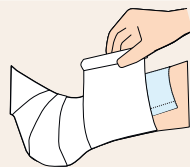
Application Guide



The dressing must be placed close to the wound, or placed in close combination with suitable dressing.



Secure the dressing with suitable bandage, film or tape.

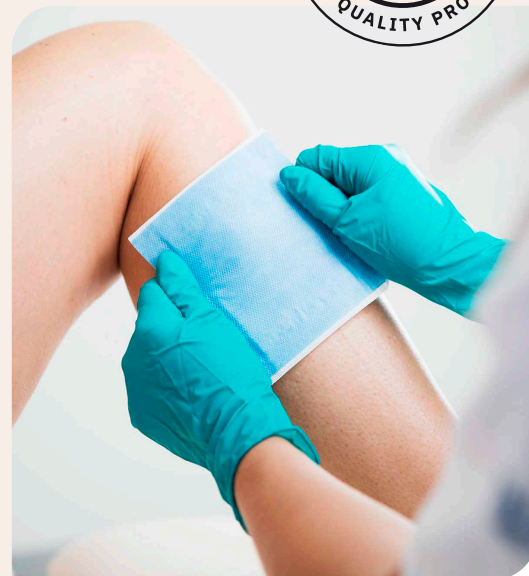


DryMax Blue can be used in conjunction with compression therapy.

Product size (cm)	Pcs/box	Absorption-capacity*	REF	PIP Code	NHS CAT Number
11x10	10	125 ml	F60093/10	421-9606	EJA290
11x20	10	310 ml	F60095/10	421-9598	EJA284
20x20	10	600 ml	F60096/10	421-9614	EJA291
20x30	10	910 ml	F60097/10	421-9622	EJA289

The average free swell absorption capacity* of DryMax Soft is 1.8 ml per cm² of the product core.

*) According to international standard EN 13726



- **Cost effective**
- **User friendly**
- **Increased patient comfort**
- **Improved wound healing***

* Compared to conventional wound dressings



DryMax[®] technology